

# American Association of State Highway and Transportation Officials



An Application from the State Highway or Transportation Department of  
Florida

---

for

- the Elimination of a U.S. (I) Route \_\_\_\_\_
- the Establishment of a U.S. (I) Route \_\_\_\_\_
- \* the Establishment of a U.S. Bike Route \_\_\_\_\_
- the Relocation of a U.S. (I) Route 98
- \* the Relocation of a U.S. Bike Route \_\_\_\_\_
- the Extension of a U.S. (I) Route \_\_\_\_\_
- the Establishment of a U.S. Alternate Route \_\_\_\_\_
- the Establishment of a Temporary U.S. Route \_\_\_\_\_
- \*\* the Recognition of a Business Route on U.S. (I) Route \_\_\_\_\_
- \*\* the Recognition of a By-Pass Route on U.S. Route \_\_\_\_\_

Between 507 (N. of Highland View) and 511 (S. of St. Joe Beach)

The following states or states are involved:

Florida

---



---



---



---



---

<b>For AASHTO Use Only</b>	Date received _____
Date application acknowledged _____	Date to Special Committee on U.S. Route Numbering _____
Date considered by the Standing Committee on Highways _____	Action of Standing Committee on Highways _____
Member Department Notified _____	

Date submitted:

\_\_\_\_\_, 20\_\_\_\_

\* Attach map on page 3. Obtain Signatures, page 4. Other sections not applicable.  
 \*\* A local vicinity map needed on page 3. On page 6 a short statement to the effect that there are no deficiencies on proposed routing, if true, will suffice. If there are deficiencies, they should be indicated in accordance with page 5 instructions.

**SUBMIT SIX COPIES**

The purpose of the **United States (U.S.) Numbered Highway System** is to facilitate travel on the main interstate highways, over the shortest routes and the best available roads. A route should form continuity of available facilities through two or more states that accommodate the most important and heaviest motor traffic flow in the area.

The routes comprising the **National System of Interstate and Defense Highways** will be marked with its own distinctive route marker shield and will have a numbering system that is separate and apart from the U.S. Numbered Highway System. For the convenience of the motorist, there must be continuity and a uniform pattern of marking and numbering these Interstate routes without regard to state lines.

The U.S. Numbered System was established in 1926 and the Interstate Numbered System was established in 1956. Both have reached the period of review, revision, and consolidation. They now need perfecting rather than expansion. Therefore, any proposed alteration in the established systems should be extremely meritorious and thoroughly, though concisely, explained in order that the Special Committee on U.S. Route Numbering and the Standing Committee on Highways of the Association may give prompt and proper consideration to each and every request made by a member department.

**Explanation and Reasons for the Request:** (Keep concise and pertinent.) This request is to relocate a 3.583 mile portion of U.S. 98 in Gulf County, Florida onto a newly constructed roadbed away from the Gulf coast. There it will be less vulnerable to erosion, road damage, and closure due to hurricanes and tropical storms in the Gulf of Mexico. A public hearing was held on December 13, 2001, in Port St. Joe, Florida. Approximately 300 people were in attendance. Only three of 43 oral comments and three of 29 written comments on the project were negative and a large majority of comments favored the change.

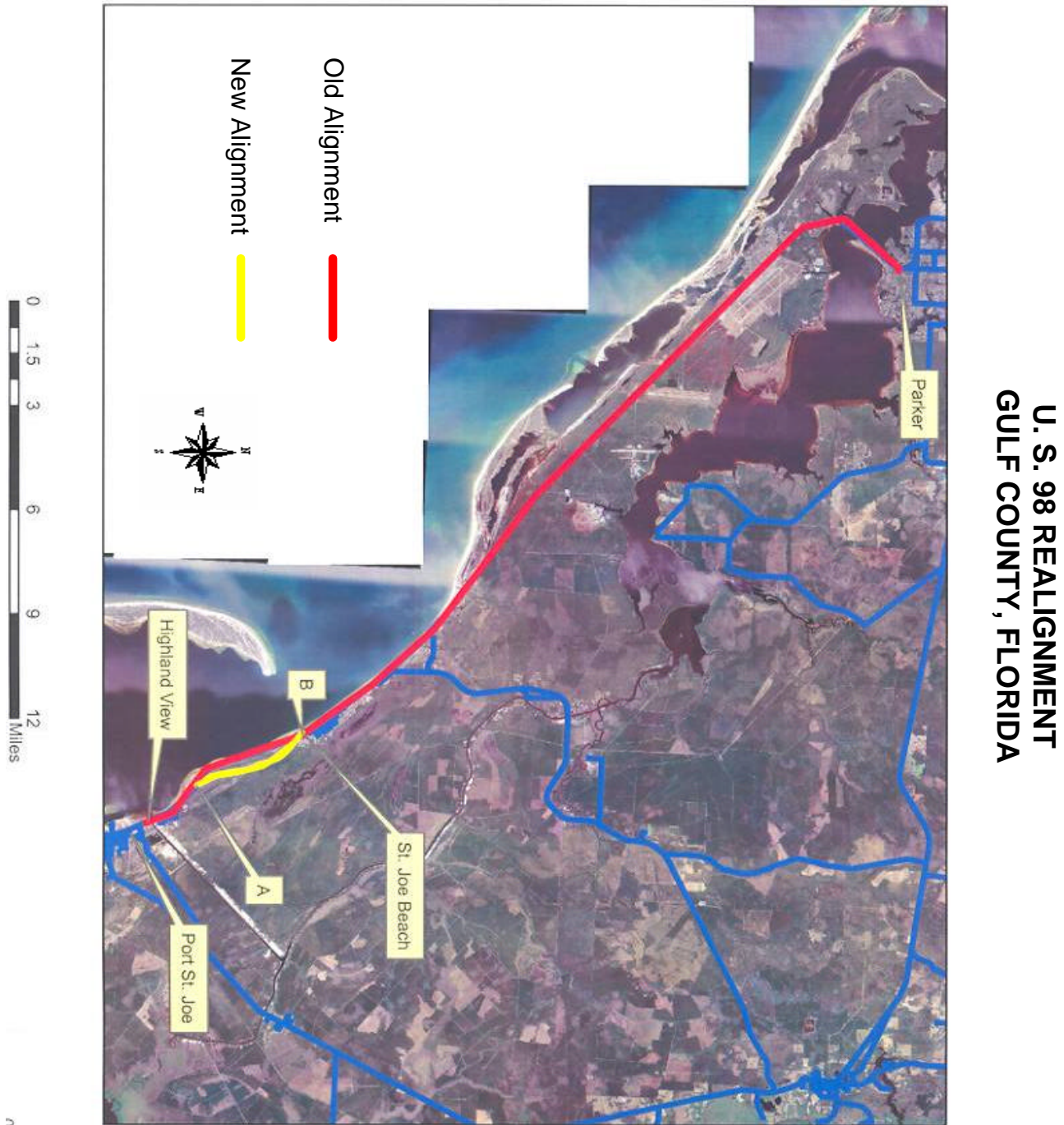
Date facility available to traffic July 2006

Does the petition propose a new routing over a portion of an existing U.S. Route? No If so, where? \_\_\_\_\_

Does the petition propose a new routing over a portion of an existing Interstate Route? No If so, where? \_\_\_\_\_

**Map of state, or portion thereof, indicating proposed addition or change in the U.S. Numbered or Interstate Numbered System:**

(A photographic reduction or section of departmental map attached to this sheet. May be folded to sheet size, but do not use a map larger than four 8.5 x 11 inch sheets in size.)



(Indicate termini and control points on the map for the route, and number them in sequence. Use the same numbers in column 1 tabulation, page 6, when listing mileage. **Towns, cities, major highway intersections and state lines to be used as control points.** The top of column 1, page 6, will be one terminus, and column 1 will give the log of the route as needed to describe the route in the Association publication *U.S. Numbered Highways* if the application is approved by the Standing Committee on Highways.)

The State agrees and pledges its good faith that it will not erect, remove, or change any U.S. or Interstate Route Markers on any road without the authorization, consent, or approval of the Standing Committee on Highways of the American Association of State Highway and Transportation Officials, notwithstanding the fact that the changes proposed are entirely within this State.

\_\_\_\_\_

The weighted average daily traffic volume along the proposed route, as shown on the map on page 3, is   0   as compared to 18,342 for the year 2004 for all other U.S. Numbered Routes in the State.

\_\_\_\_\_

*The Purpose and Policy in the Establishment and Development of the United States Numbered Highways, as Retained from October 3, 1991 or the Purpose and Policy in the Establishment of a Marking System of the Routes Comprising the National System of Interstate and Defense Highways as Retained from August 10, 1973 has been read and is accepted.*

In our opinion, this petition complies with the above applicable policy.

**Chief Executive Officer**

\_\_\_\_\_  
(Signature)

\_\_\_\_\_  
(Member Department)

This petition is authorized by official action of \_\_\_\_\_

under date of \_\_\_\_\_ as follows: (Copy excerpt from minutes.)

## Instructions for Preparation of Page 6

**Column 1: Control Points and Mileage.** Top of column is one terminus of road. Indicate control points by identical number as shown on map on page 3. Show mileage between control points in miles and tenths.

<b>Column 2: Pavement Type.</b>	<b>Code</b>
High type, heavy duty	H
Intermediate type	I
Low type, dustless	L (show in red)
Not paved	N (show in red)

<b>Column 3: Pavement Condition</b>	<b>Code</b>
Excellent	E
Good	G
Fair	F (show in red)
Poor	P (show in red)

NOTE: In columns 2 and 3, where pavements types and conditions change, the location of the change shall be indicated by a short horizontal line at the proper place opposite the mileage log and the proper code letter (shown above) shall be entered in the respective column between the locations so indicated.

**Column 4: Traffic.** Indicate average daily traffic volumes in this column. Points of changes in these data to be indicated by short horizontal lines opposite the appropriate mileage point on the mileage log. Any existing main line rail crossing that is not separated shall be indicated at the appropriate mileage point by RXR - black if signalized - red if not protected by signals.

**Columns 5 & 6: Pavement Width and Shoulder Width.** These columns to be completed by comparing standards of highway involved with applicable AASHTO standards. Entries that fall to the right of the tolerance lines (dashed) should be shaded in red. If there are no deficiencies indicate by use of the word NONE.

**Columns 7 & 8: Major Structures.** Show in these columns those structures that do not meet AASHTO standards. Show by horizontal line sufficiently long to indicate percentage of deficiency. Portion on right of tolerance line shall be shown in red. Indicate length of structure in feet immediately under the line. Any sub-standard highway underpass structure shall be shown opposite the appropriate mileage point by the designation LP with the vertical clearance in feet following and shown in red. If there are no deficiencies indicate by the use of the word NONE.

**Column 9: Vertical Sight Distance.** Items to be shown in this column as a horizontal line, the length of which will indicate the deficiency as determined in accordance with comparisons with comparable AASHTO standards. Portions of the line past the tolerance line shall be shown in red.

**Column 10: Horizontal Curvature.** Curves in excess of AASHTO applicable standards to be shown in this column by a short horizontal line with degree of curve shown immediately above the line. To be shown in red.

**Column 11: Percent Grades.** Show by horizontal lines opposite proper mileage point on mileage log. Show percent of grade above the line and length of grade in feet immediately below. To be shown in red.



## UNITED STATES HIGHWAY NUMBER 98

State	Type	Intersection	Point To Point Mileage	Accumulated Mileage in State	Remarks
Florida	Regular	West Palm Beach	0	0	Route begins, Jct. U.S. 1
		West Palm Beach	1	1	Crosses I-95
		Jct. W. West Palm Beach	8	9	Joins U.S. 441
		Okeechobee	70	79	Leaves U.S. 441
		Jct. S. Sebring	43	122	Joins U.S. 27
		Sebring	5	127	
		Avon Park	9	136	
		Jct. S.W. Frostproof	7	143	
		Jct. W. Frostproof	4	147	Leaves U.S. 27
		Fort Meade	15	162	Joins U.S. 17
		Bartow	11	173	Leaves U.S. 17
		Lakeland	14	187	Crosses U.S. 92
		Jct. N. Lakeland	2	189	Crosses I-4
		S. of Dade City	23	212	Joins U.S. 301
	S. Dade City	2	214	U.S. 98 Bus. begins and leaves	
	Business	S. Dade City	0	0	Route begins, leaves U.S. 98
		N. Dade City	1	1	Route ends, rejoins U.S. 98
	Regular	N. Dade City	2	216	U.S. 98 Bus. rejoins and ends
		N. of Dade City	6	222	Leaves U.S. 301
		Jct. E. Brooksville	7	229	Crosses I-75
		Brooksville	10	239	Crosses U.S. 41
		Jct. S. Homosassa Springs	17	256	Joins U.S. 19
		Homosassa Springs	6	262	
		Crystal River	7	269	
Chiefland		47	316	Joins U.S. 27 Alt.; U.S. 129 joins and ends	
Old Town		12	328		
Cross City		9	337		
Jct. S. Perry		44	381	U.S. 221 joins and ends	
Perry		1	382	Leaves U.S. 19; crosses U.S. 27; U.S. 27 Alt. Begins	
Medart		53	435	Joins U.S. 319	
Jct. S. Medart		2	437	Leaves U.S. 319	
Jct. E. Carrabelle		19	456	Joins U.S. 319	
Apalachicola		31	487	U.S. 319 ends	
Port St. Joe		23	510		
N. of Highland View		2	512	Begin new alignment	
S. of St. Joe Beach	4	516	End new alignment		
Parker	24	540	U.S. 98 Bus. begins and leaves		
Business	Parker	0	0	Route begins, leaves U.S. 98	
	Panama City	6	6	U.S. 231 joins and ends	
	Panama City	3	9	Route ends, rejoins U.S. 98	
Regular	Panama City	7	547	Crosses U.S. 231	
	Panama City	3	550	U.S. 98 Bus. rejoins and ends	

<b>State</b>	<b>Type</b>	<b>Intersection</b>	<b>Point To Point Mileage</b>	<b>Accumulated Mileage in State</b>	<b>Remarks</b>
		St. Andrews Bay	4	554	U.S. 98 Alt. begins and leaves
Alternate		St. Andrews Bay	0	0	Route begins, leaves U.S. 98
		Phillips Inlet	16	16	Route ends, rejoins U.S. 98
Regular		Phillips Inlet	15	569	U.S. 98 Alt. rejoins and ends
		Jct. E. Santa Rosa Beach	12	581	U.S. 331 joins and ends
		Pensacola	56	637	U.S. 98 Bus. begins and leaves; joins U.S. 90
Business		Pensacola	0	0	Route begins, leaves U.S. 98
		Pensacola	1	1	I-110 joins and ends
		Pensacola	1	2	Route ends, rejoins U.S. 98
Regular		Pensacola	1	638	U.S. 29 joins and ends, crosses I-110
		Pensacola	1	639	Leaves U.S. 90
		Pensacola	1	640	U.S. 98 Bus. rejoins and ends
		State Line	13	653	